

15-Minute Triad Workout

♩ = 60

1. Play (and spell) the major scale in position:

2. Diatonic triads ascending in both directions

optional extra: play in eighth-note triplets and 16th notes

2

3. All triads descending in both directions:

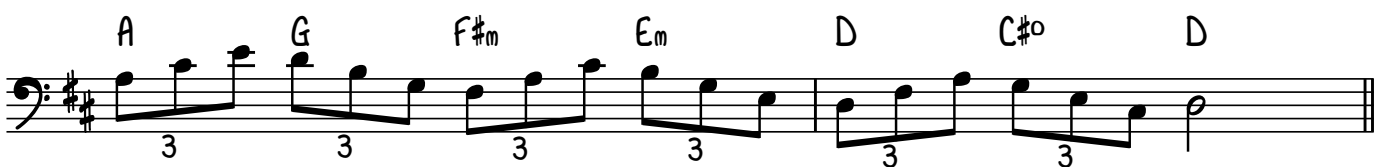
D Em F#m G A Bm C#o Bm

A G F#m Em D C#o D

D Em F#m G A Bm C#o Bm

A G F#m Em D C#o D

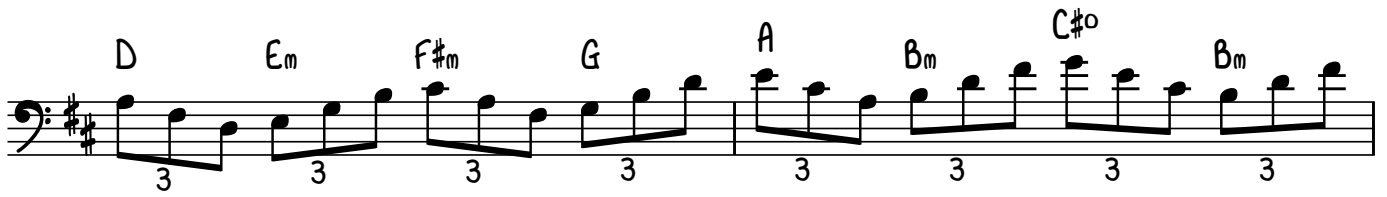
4. Ascending then descending in both directions:



D Em F#m G A Bm
 C#o Bm A G F#m
 Em D C#o D

5. Descending then ascending in both directions:

D Em F#m G A Bm C#o Bm
 A G F#m Em D C#o D D Em F#m
 G A Bm C#o Bm
 A G F#m Em D C#o D



6 Two octave triad fingerings:

D

2 1 4 → 4 3 1 3 4 ← 4 1 2

shift up shift down

Detailed description: This musical staff shows the D major triad (D, F#, A) in the bass clef. The first measure contains notes D (2), F# (1), and A (4). The second measure shows a 'shift up' from A (4) to A (4) on the next string. The third measure shows notes D (4), F# (3), and A (1). The fourth measure shows notes D (3), F# (3), and A (1). The fifth measure shows a 'shift down' from A (1) to A (4) on the previous string. The sixth measure shows notes D (4), F# (4), and A (1). The seventh measure shows notes D (1) and F# (2).

E_m

1 4 3 → 4 2 1 2 4 ← 3 4 1

Detailed description: This musical staff shows the E minor triad (E, G, B) in the bass clef. The first measure contains notes E (1), G (4), and B (3). The second measure shows a 'shift up' from B (3) to B (4) on the next string. The third measure shows notes E (2), G (1), and B (2). The fourth measure shows notes E (4), G (2), and B (4). The fifth measure shows a 'shift down' from B (4) to B (3) on the previous string. The sixth measure shows notes E (3), G (4), and B (1). The seventh measure shows notes E (4) and G (1).

Alternative open string fingering for E minor:

E_m

0 2 1 → 4 2 1 2 4 ← 1 2 0

Detailed description: This musical staff shows the E minor triad (E, G, B) in the bass clef. The first measure contains notes E (0), G (2), and B (1). The second measure shows a 'shift up' from B (1) to B (4) on the next string. The third measure shows notes E (4), G (2), and B (1). The fourth measure shows notes E (2), G (2), and B (4). The fifth measure shows a 'shift down' from B (4) to B (1) on the previous string. The sixth measure shows notes E (1), G (2), and B (0).

F#_m

1 4 3 → 4 2 1 2 4 ← 3 4 1

Detailed description: This musical staff shows the F# minor triad (F#, A, C) in the bass clef. The first measure contains notes F# (1), A (4), and C (3). The second measure shows a 'shift up' from C (3) to C (4) on the next string. The third measure shows notes F# (4), A (2), and C (1). The fourth measure shows notes F# (2), A (2), and C (4). The fifth measure shows a 'shift down' from C (4) to C (3) on the previous string. The sixth measure shows notes F# (3), A (4), and C (1). The seventh measure shows notes F# (4) and A (1).

G

2 1 4 → 4 3 1 3 4 ← 4 1 2

Detailed description: This musical staff shows the G major triad (G, B, D) in the bass clef. The first measure contains notes G (2), B (1), and D (4). The second measure shows a 'shift up' from D (4) to D (4) on the next string. The third measure shows notes G (4), B (3), and D (1). The fourth measure shows notes G (3), B (3), and D (1). The fifth measure shows a 'shift down' from D (1) to D (4) on the previous string. The sixth measure shows notes G (4), B (4), and D (1). The seventh measure shows notes G (1) and B (2).

A

2 1 4 → 4 3 1 3 4 ← 4 1 2

Detailed description: This musical staff shows the A major triad (A, C#, E) in the bass clef. The first measure contains notes A (2), C# (1), and E (4). The second measure shows a 'shift up' from E (4) to E (4) on the next string. The third measure shows notes A (4), C# (3), and E (1). The fourth measure shows notes A (3), C# (3), and E (1). The fifth measure shows a 'shift down' from E (1) to E (4) on the previous string. The sixth measure shows notes A (4), C# (4), and E (1). The seventh measure shows notes A (1) and C# (2).

B_m

1 4 3 → 4 2 1 2 4 ← 3 4 1

Detailed description: This musical staff shows the B minor triad (B, D, F) in the bass clef. The first measure contains notes B (1), D (4), and F (3). The second measure shows a 'shift up' from F (3) to F (4) on the next string. The third measure shows notes B (4), D (2), and F (1). The fourth measure shows notes B (2), D (2), and F (4). The fifth measure shows a 'shift down' from F (4) to F (3) on the previous string. The sixth measure shows notes B (3), D (4), and F (1). The seventh measure shows notes B (4) and D (1).

C#_o

1 4 2 → 3 1 4 1 3 ← 2 4 1

Detailed description: This musical staff shows the C# diminished triad (C#, E, G) in the bass clef. The first measure contains notes C# (1), E (4), and G (2). The second measure shows a 'shift up' from G (2) to G (3) on the next string. The third measure shows notes C# (3), E (1), and G (4). The fourth measure shows notes C# (1), E (4), and G (1). The fifth measure shows notes C# (3), E (2), and G (4). The sixth measure shows a 'shift down' from G (4) to G (2) on the previous string. The seventh measure shows notes C# (2), E (4), and G (1).

Two octave triads, descending:

Major triad:

Musical notation for a descending major triad exercise in D major. The exercise is written on a single bass clef staff. It begins with a D major triad (D4, F#4, A4) with a fingering of 1, 3, 4. The notes are then played in descending order: D4 (fingering 4), F#4 (fingering 1), and A4 (fingering 2). This sequence is repeated twice. The first repetition includes arrows indicating the direction of movement: a left-pointing arrow from the first D4 to the first F#4, and a right-pointing arrow from the first A4 to the first D4. The second repetition includes a right-pointing arrow from the second D4 to the second F#4, and a left-pointing arrow from the second A4 to the second D4.

Minor triad:

Musical notation for a descending minor triad exercise in E minor. The exercise is written on a single bass clef staff. It begins with an E minor triad (E4, G4, B4) with a fingering of 1, 2, 4. The notes are then played in descending order: E4 (fingering 4), G4 (fingering 3), and B4 (fingering 1). This sequence is repeated twice. The first repetition includes arrows indicating the direction of movement: a left-pointing arrow from the first E4 to the first G4, and a right-pointing arrow from the first B4 to the first E4. The second repetition includes a right-pointing arrow from the second E4 to the second G4, and a left-pointing arrow from the second B4 to the second E4.

Diminished triad:

Musical notation for a descending diminished triad exercise in C# diminished. The exercise is written on a single bass clef staff. It begins with a C# diminished triad (C#4, E4, G4) with a fingering of 4, 1, 3. The notes are then played in descending order: C#4 (fingering 2), E4 (fingering 4), and G4 (fingering 1). This sequence is repeated twice. The first repetition includes arrows indicating the direction of movement: a right-pointing arrow from the first C#4 to the first E4, and a left-pointing arrow from the first G4 to the first C#4. The second repetition includes a left-pointing arrow from the second C#4 to the second E4, and a right-pointing arrow from the second G4 to the second C#4.

Musical notation for a descending major triad exercise in D major. The exercise is written on a single bass clef staff. It begins with a D major triad (D4, F#4, A4) with a fingering of 4, 1, 3. The notes are then played in descending order: D4 (fingering 4), F#4 (fingering 1), and A4 (fingering 3). This sequence is repeated twice. The first repetition includes arrows indicating the direction of movement: a right-pointing arrow from the first D4 to the first F#4, and a left-pointing arrow from the first A4 to the first D4. The second repetition includes a left-pointing arrow from the second D4 to the second F#4, and a right-pointing arrow from the second A4 to the second D4.

Musical notation for a descending major triad exercise in G major. The exercise is written on a single bass clef staff. It begins with a G major triad (G4, B4, D5) with a fingering of 1, 3, 4. The notes are then played in descending order: G4 (fingering 4), B4 (fingering 1), and D5 (fingering 3). This sequence is repeated twice. The first repetition includes arrows indicating the direction of movement: a right-pointing arrow from the first G4 to the first B4, and a left-pointing arrow from the first D5 to the first G4. The second repetition includes a left-pointing arrow from the second G4 to the second B4, and a right-pointing arrow from the second D5 to the second G4.

Musical notation for a descending major triad exercise in C# major. The exercise is written on a single bass clef staff. It begins with a C# major triad (C#4, E4, G4) with a fingering of 4, 1, 3. The notes are then played in descending order: C#4 (fingering 4), E4 (fingering 1), and G4 (fingering 3). This sequence is repeated twice. The first repetition includes arrows indicating the direction of movement: a right-pointing arrow from the first C#4 to the first E4, and a left-pointing arrow from the first G4 to the first C#4. The second repetition includes a left-pointing arrow from the second C#4 to the second E4, and a right-pointing arrow from the second G4 to the second C#4.

Musical notation for a descending major triad exercise in D major with triplets. The exercise is written on a single bass clef staff. It begins with a D major triad (D4, F#4, A4) with a fingering of 4, 1, 3. The notes are then played in descending order: D4 (fingering 4), F#4 (fingering 1), and A4 (fingering 3). This sequence is repeated twice. The first repetition includes arrows indicating the direction of movement: a right-pointing arrow from the first D4 to the first F#4, and a left-pointing arrow from the first A4 to the first D4. The second repetition includes a left-pointing arrow from the second D4 to the second F#4, and a right-pointing arrow from the second A4 to the second D4.

Musical notation for a descending major triad exercise in A major with triplets. The exercise is written on a single bass clef staff. It begins with an A major triad (A4, C#5, E5) with a fingering of 1, 3, 4. The notes are then played in descending order: A4 (fingering 4), C#5 (fingering 1), and E5 (fingering 3). This sequence is repeated twice. The first repetition includes arrows indicating the direction of movement: a right-pointing arrow from the first A4 to the first C#5, and a left-pointing arrow from the first E5 to the first A4. The second repetition includes a left-pointing arrow from the second A4 to the second C#5, and a right-pointing arrow from the second E5 to the second A4.