

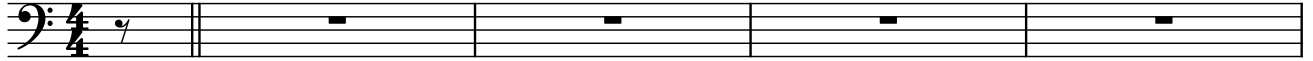
# Adventure of a Lifetime

Coldplay - 'A Head Full of Dreams' (2015)

Bass: Guy Berryman

♩ = 113

## Intro



## Main Groove



## Verse



## Prechorus



## Chorus



## Verse 2



2

# Prechorus

37 Dm G Am7

Measure 37: Bass clef, 4/4 time. Chords: Dm (F, C, G), G (B, D, G), Am7 (A, C, E, G). The melody consists of eighth and quarter notes with some rests.

41 Dm G Am7 Em

Measure 41: Bass clef, 4/4 time. Chords: Dm (F, C, G), G (B, D, G), Am7 (A, C, E, G), Em (D, F, A, C). The melody continues with eighth and quarter notes.

# Chorus

45 Dm G Am7

Measure 45: Bass clef, 4/4 time. Chords: Dm (F, C, G), G (B, D, G), Am7 (A, C, E, G). The melody is a rhythmic eighth-note pattern.

49 Dm G Am7

Measure 49: Bass clef, 4/4 time. Chords: Dm (F, C, G), G (B, D, G), Am7 (A, C, E, G). The melody continues with eighth and quarter notes.

53 Dm G Am7

Measure 53: Bass clef, 4/4 time. Chords: Dm (F, C, G), G (B, D, G), Am7 (A, C, E, G). The melody consists of quarter notes.

# Breakdown Verse

57 Dm G Am7

Measure 57: Bass clef, 4/4 time. Chords: Dm (F, C, G), G (B, D, G), Am7 (A, C, E, G). The melody consists of quarter notes.

61 Dm G Am7 Em

Measure 61: Bass clef, 4/4 time. Chords: Dm (F, C, G), G (B, D, G), Am7 (A, C, E, G), Em (D, F, A, C). The melody consists of quarter notes.

# Chorus

67 Dm G Am7

Measure 67: Bass clef, 4/4 time. Chords: Dm (F, C, G), G (B, D, G), Am7 (A, C, E, G). The melody is a rhythmic eighth-note pattern.

# Outro (w/variations on rpt)

71 Dm G Am7 x7

Measure 71: Bass clef, 4/4 time. Chords: Dm (F, C, G), G (B, D, G), Am7 (A, C, E, G). The melody is a rhythmic eighth-note pattern. A repeat sign is at the end.

75

Measure 75: Bass clef, 4/4 time. The melody consists of quarter notes.