

♩ = 130

# EASY LOVER

PHILIP BAILEY - 'CHINESE WALL' (1985)

BASS: NATHAN EAST

## INTRO



## CHORUS



## VERSE

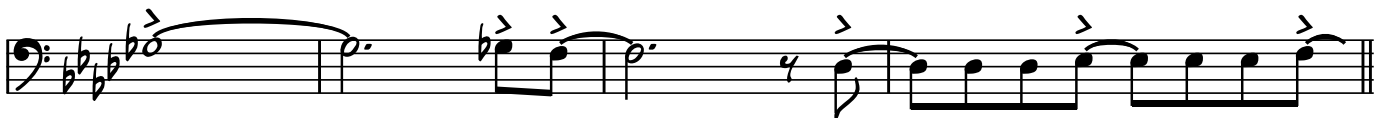




## PRECHORUS



## MIDDLE 8



## GUITAR SOLO (w/VARIATIONS)



PRECHORUS

Musical notation for the Prechorus section, consisting of two staves of bass clef music in a key signature of three flats (B-flat, E-flat, A-flat). The first staff contains a melodic line with a repeat sign at the beginning and end. The second staff continues the melody with accents over several notes.

CHORUS

REPEAT TO FADE

Musical notation for the Chorus section, consisting of one staff of bass clef music in a key signature of three flats. The notation includes a repeat sign at the beginning and end, and a fermata over the final note.