

# PARANOID ANDROID

RADIOHEAD - 'OK COMPUTER' (1997)

BASS: COLIN GREENWOOD

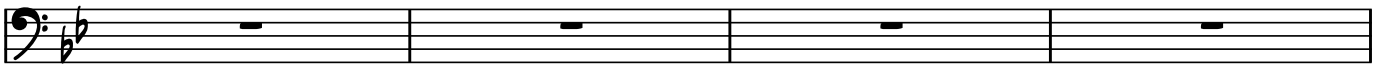
♩ = 82

## INTRO

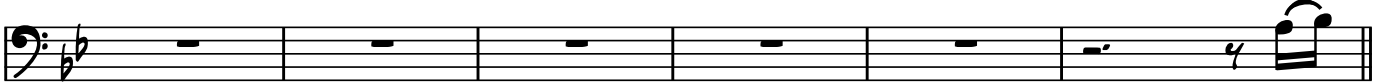


**A**

7



11



**B**

17



19



21



**A2**

24



27



30



32



**B2**

34

37

39

**C**

41

43

45

47

**C2**

49

53

55

C3

57

Musical staff for measure 57, featuring a bass clef, a key signature of two flats, and a complex rhythmic pattern with eighth and sixteenth notes.

61

Musical staff for measure 61, featuring a bass clef, a key signature of two flats, and a complex rhythmic pattern with eighth and sixteenth notes.

63

Musical staff for measure 63, featuring a bass clef, a key signature of two flats, and a complex rhythmic pattern with eighth and sixteenth notes.

C4 GUITAR SOLO

65

Musical staff for measure 65, featuring a bass clef, a key signature of two flats, and a complex rhythmic pattern with eighth and sixteenth notes.

69

Musical staff for measure 69, featuring a bass clef, a key signature of two flats, and a complex rhythmic pattern with eighth and sixteenth notes.

71

Musical staff for measure 71, featuring a bass clef, a key signature of two flats, and a complex rhythmic pattern with eighth and sixteenth notes.

D BREAKDOWN

73 ♩ = 62

Musical staff for measure 73, featuring a bass clef, a key signature of two flats, and a simple rhythmic pattern with quarter notes.

24

Musical staff for measure 75-98, featuring a bass clef, a key signature of two flats, and a long horizontal line indicating a sustained note or a break in the music.

75-98

99

Musical staff for measure 99, featuring a bass clef, a key signature of two flats, and a simple rhythmic pattern with quarter notes.

103

Musical staff for measure 103, featuring a bass clef, a key signature of two flats, and a complex rhythmic pattern with eighth and sixteenth notes.

C5

♩ = 82  
107