

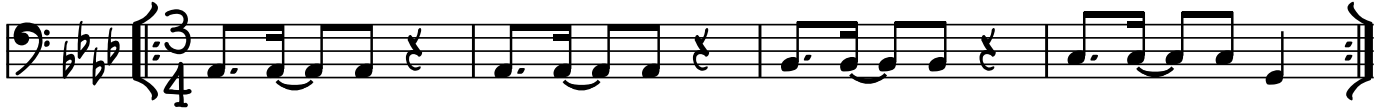
♩ = 132

# THAT'S WHAT YOU GET

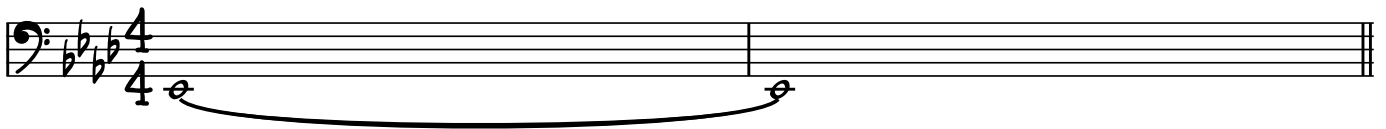
PARAMORE - 'RIOT!' (2007)

BASS: JEREMY DAVIS

## INTRO



## VERSE

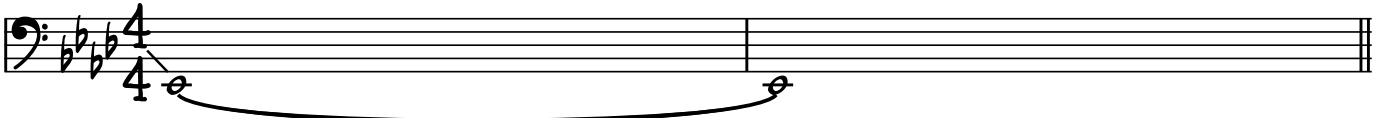


## CHORUS





VERSE 2



CHORUS 2



TO CODA



MIDDLE 8

x4

Musical notation for the first line of the Middle 8 section, featuring a bass clef, key signature of three flats, and a 3/4 time signature. The melody consists of eighth and quarter notes.

Musical notation for the second line of the Middle 8 section, continuing the melody from the first line.

BREAKDOWN

D.S. AL CODA

Musical notation for the Breakdown section, starting with a 4/4 time signature and a key signature of three flats. It includes a rest followed by a sequence of eighth notes.

♩ OUTRO

Musical notation for the Outro section, featuring a bass clef, key signature of three flats, and a 3/4 time signature. The melody ends with a fermata.