

# DON'T SPEAK


NO DOUBT - 'TRAGIC KINGDOM' (1994)

♩ = 75

BASS: TONY KANAL

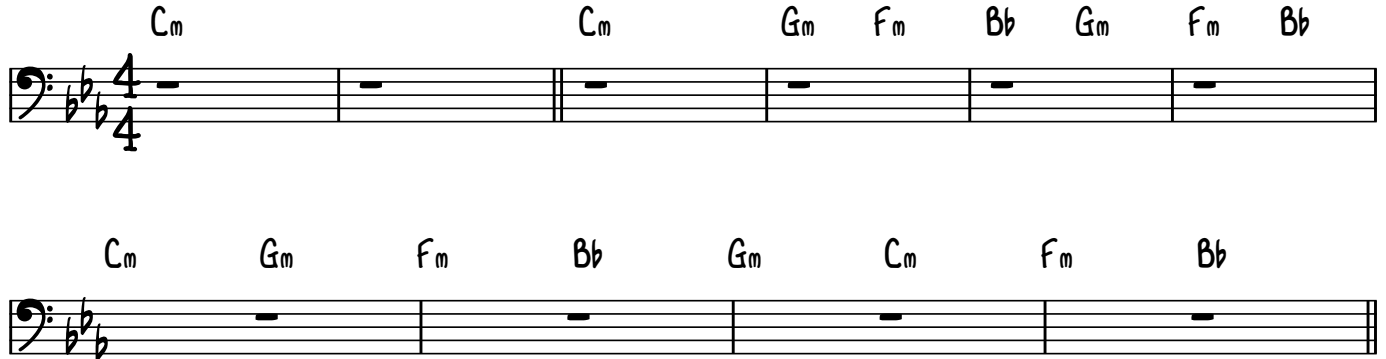
## INTRO

Cm



## VERSE

Cm Gm Fm Bb Gm Cm Fm Bb



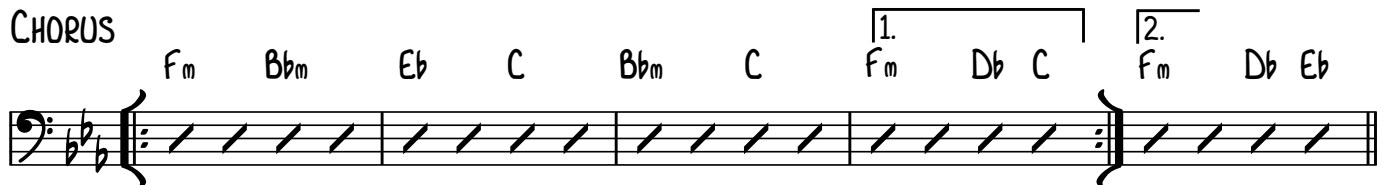
## PRECHORUS (BASS ENTERS)

Cm Gm Fm Bb Eb Bb C



## CHORUS

Fm Bbm Eb C Bbm C 1. Fm Db C 2. Fm Db Eb



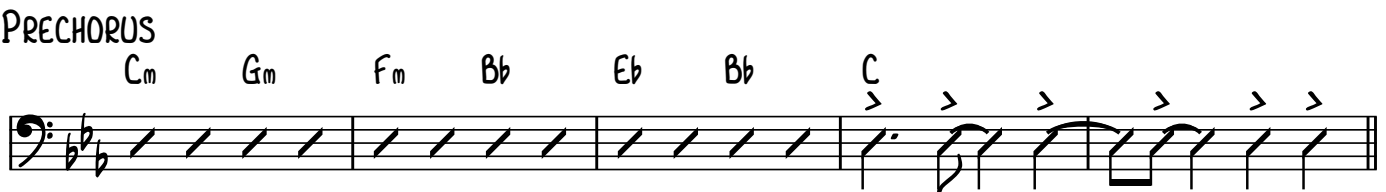
## VERSE

Cm Gm Fm Bb Gm Fm Bb



## PRECHORUS

Cm Gm Fm Bb Eb Bb C



## CHORUS

Fm Bbm Eb C Bbm C 1. Fm Db C 2.



## MIDDLE 8

Db Ab/C B Gb/Bb

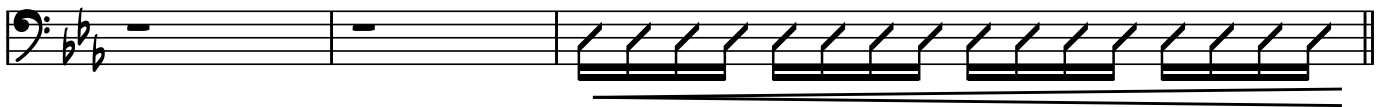


## SOLO

Cm Gm Fm Bb X3 Gm Cm Fm



Cm Gm Fm Bb F Bb



## CHORUS/OUTRO

Fm Bbm Eb C Bbm C Fm Db C XLOTS

