

THE CAVE

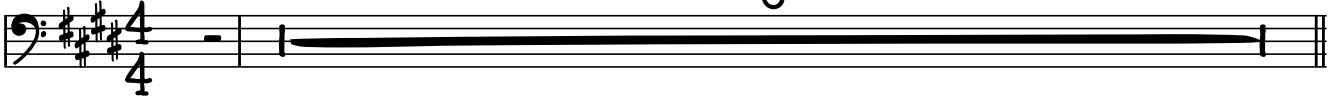
MUMFORD & SONS - 'SIGH NO MORE' (2009)

BASS: TED DWAYNE

♩ = 142

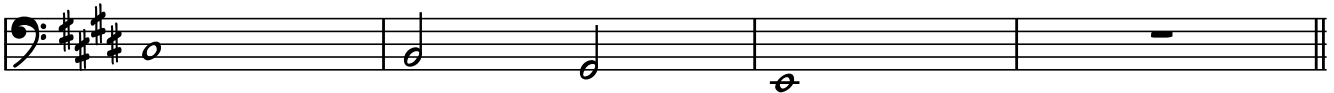
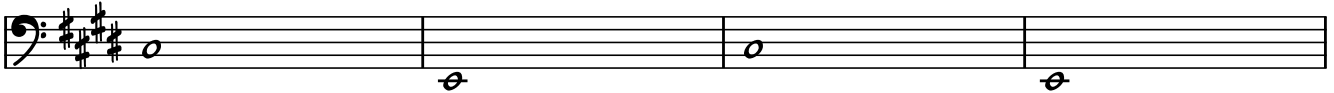
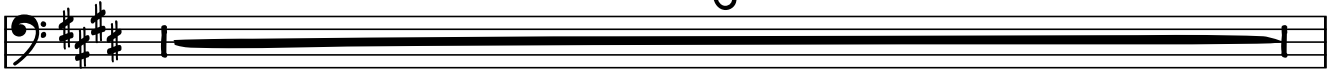
INTRO

8



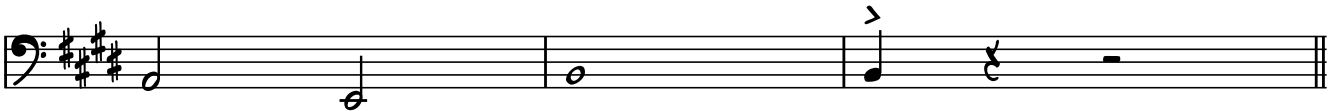
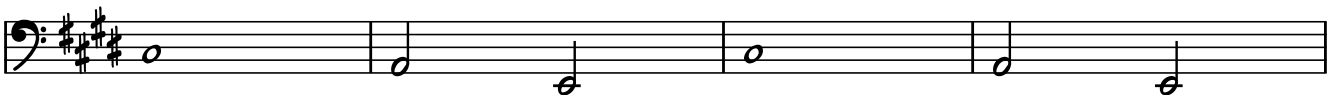
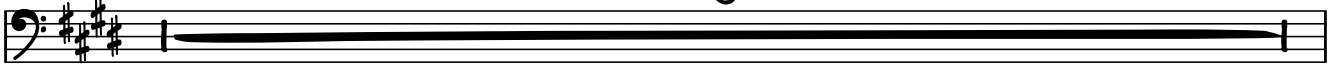
VERSE

8



CHORUS

6

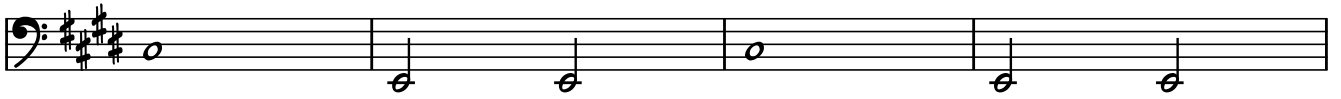


LINK

sim.



VERSE



CHORUS



VERSE

The Verse section consists of four staves of bass notation in G major (one sharp). The first staff contains four whole notes: G2, B2, D3, and G3. The second staff begins with a whole note G2, followed by quarter notes B2, D3, and E3, and ends with a six-measure rest indicated by a horizontal line with the number '6' above it. The third staff contains quarter notes G2, B2, D3, and E3, followed by quarter notes G3, B3, and D4. The fourth staff contains quarter notes G2, B2, D3, and E3, followed by quarter notes G3, B3, and D4.

INSTRUMENTAL

The Instrumental section consists of two staves of bass notation in G major. The first staff begins with a repeat sign and contains quarter notes G2, B2, D3, E3, G3, B3, D4, E4, G4, B4, D5, and E5. The second staff contains quarter notes G2, B2, D3, E3, G3, B3, D4, E4, G4, B4, D5, and E5, ending with a repeat sign.

CHORUS

The Chorus section consists of three staves of bass notation in G major. The first staff contains quarter notes G2, B2, D3, E3, G3, B3, D4, E4, G4, B4, D5, and E5. The second staff contains quarter notes G2, B2, D3, E3, G3, B3, D4, E4, G4, B4, D5, and E5. The third staff contains quarter notes G2, B2, D3, E3, G3, B3, D4, E4, G4, B4, D5, and E5, ending with a repeat sign.