

♩ = 115

LADY MARMALADE

LABELLE - 'NIGHTBIRDS' (1974)

BASS: GEORGE PORTER JR.

INTRO



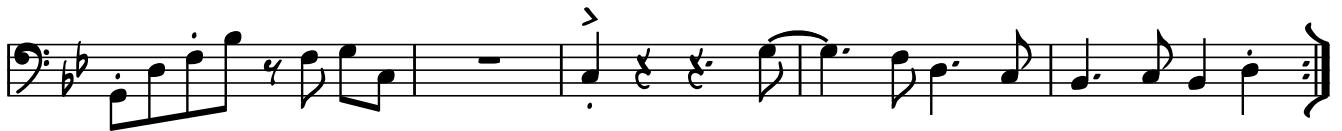
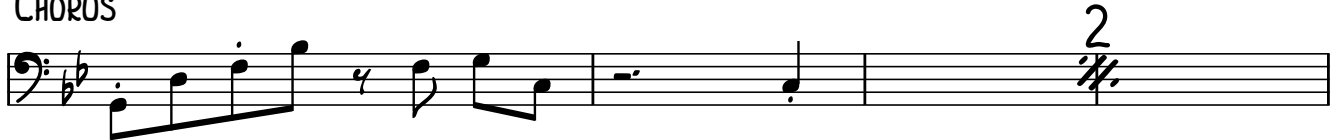
CHORUS



VERSE



CHORUS



CHORUS



BRIDGE



2

VERSE

The first Verse section consists of two staves of music. The first staff contains four measures: a quarter note G2, a quarter note A2, a quarter note Bb2, a quarter note C3; a quarter note D3, a quarter note E3, a quarter note F3, a quarter note G3; a whole rest; and a quarter note G3. The second staff contains four measures: a quarter note G3, a quarter note A3, a quarter note Bb3, a quarter note C4; a quarter note D4, a quarter note E4, a quarter note F4, a quarter note G4; a quarter note G4, a quarter note G4, a quarter note G4, a quarter note G4; a quarter note G4, a quarter note G4, a quarter note G4, a quarter note G4.

VERSE

The second Verse section consists of two staves of music. The first staff contains four measures: a quarter note G2, a quarter note A2, a quarter note Bb2, a quarter note C3; a quarter note D3, a quarter note E3, a quarter note F3, a quarter note G3; a whole rest; and a quarter note G3. The second staff contains four measures: a quarter note G3, a quarter note A3, a quarter note Bb3, a quarter note C4; a quarter note D4, a quarter note E4, a quarter note F4, a quarter note G4; a quarter note G4, a quarter note G4, a quarter note G4, a quarter note G4; a quarter note G4, a quarter note G4, a quarter note G4, a quarter note G4.

CHORUS

The first Chorus section consists of two staves of music. The first staff contains four measures: a quarter note G2, a quarter note A2, a quarter note Bb2, a quarter note C3; a quarter note D3, a quarter note E3, a quarter note F3, a quarter note G3; a whole rest; and a quarter note G3. The second staff contains four measures: a quarter note G3, a quarter note A3, a quarter note Bb3, a quarter note C4; a quarter note D4, a quarter note E4, a quarter note F4, a quarter note G4; a quarter note G4, a quarter note G4, a quarter note G4, a quarter note G4; a quarter note G4, a quarter note G4, a quarter note G4, a quarter note G4.

CHORUS

The second Chorus section consists of two staves of music. The first staff contains four measures: a quarter note G2, a quarter note A2, a quarter note Bb2, a quarter note C3; a quarter note D3, a quarter note E3, a quarter note F3, a quarter note G3; a whole rest; and a quarter note G3. The second staff contains four measures: a quarter note G3, a quarter note A3, a quarter note Bb3, a quarter note C4; a quarter note D4, a quarter note E4, a quarter note F4, a quarter note G4; a quarter note G4, a quarter note G4, a quarter note G4, a quarter note G4; a quarter note G4, a quarter note G4, a quarter note G4, a quarter note G4.

STOP-TIME CHORUS

The Stop-Time Chorus section consists of one staff of music. It contains four measures: a quarter note G3, a quarter rest, a quarter rest, a quarter note G3; a whole rest; a quarter note G3, a quarter rest, a quarter rest, a quarter note G3; and a whole rest. The section ends with a double bar line and a repeat sign, with an 'x4' multiplier.

CHORUS

VAMP TO FADE

The final Chorus section consists of one staff of music. It contains four measures: a quarter note G2, a quarter note A2, a quarter note Bb2, a quarter note C3; a quarter note D3, a quarter note E3, a quarter note F3, a quarter note G3; a whole rest; and a quarter note G3. The section ends with a double bar line and a repeat sign.