

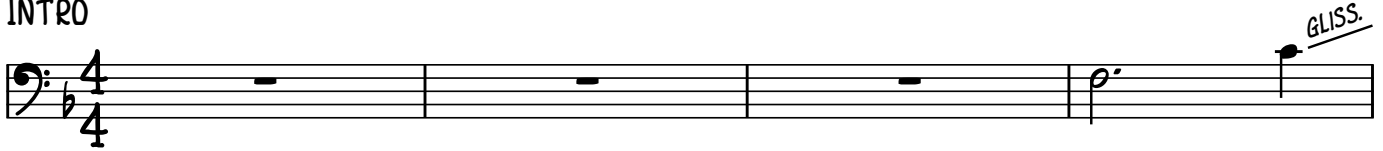
I'LL BE THERE

JACKSON 5 - 'THIRD ALBUM' (1970)

BASS: RON BROWN

♩ = 94

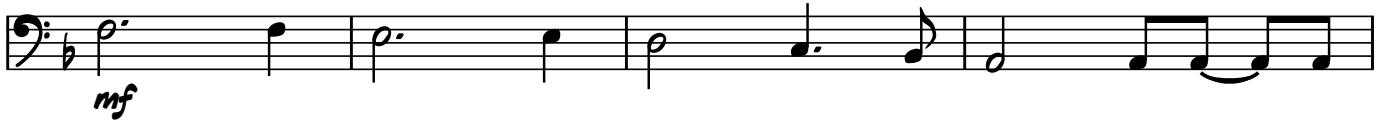
INTRO



VERSE 1



VERSE 2



BRIDGE



2

VERSE 3

Two staves of musical notation in bass clef, key of B-flat major. The first staff contains a half note G2, followed by eighth notes G2-A2, A2-B2, B2-C3, C3-B2, B2-A2, A2-G2, and a quarter note G2. The second staff continues with eighth notes G2-A2, A2-B2, B2-C3, C3-B2, B2-A2, A2-G2, followed by a glissando (GLISS.) over a half note G2, then eighth notes G2-A2, A2-B2, B2-C3, C3-B2, B2-A2, A2-G2, and a quarter note G2.

VERSE 4

Two staves of musical notation in bass clef, key of B-flat major. The first staff contains a half note G2, followed by eighth notes G2-A2, A2-B2, B2-C3, C3-B2, B2-A2, A2-G2, and a quarter note G2. The second staff continues with eighth notes G2-A2, A2-B2, B2-C3, C3-B2, B2-A2, A2-G2, followed by a glissando (GLISS.) over a half note G2, then eighth notes G2-A2, A2-B2, B2-C3, C3-B2, B2-A2, A2-G2, and a quarter note G2.

D.S AL CODA

Third staff of musical notation in bass clef, key of B-flat major. It begins with a half note G2, followed by eighth notes G2-A2, A2-B2, B2-C3, C3-B2, B2-A2, A2-G2, and a quarter note G2. A glissando (GLISS.) is indicated over a half note G2, followed by a half note G2, and a quarter note G2.

VERSE 5

Four staves of musical notation in bass clef, key of B-flat major. The first staff contains a half note G2, followed by eighth notes G2-A2, A2-B2, B2-C3, C3-B2, B2-A2, A2-G2, and a quarter note G2. The second staff continues with eighth notes G2-A2, A2-B2, B2-C3, C3-B2, B2-A2, A2-G2, followed by a glissando (GLISS.) over a half note G2, then eighth notes G2-A2, A2-B2, B2-C3, C3-B2, B2-A2, A2-G2, and a quarter note G2. The third staff continues with eighth notes G2-A2, A2-B2, B2-C3, C3-B2, B2-A2, A2-G2, followed by a glissando (GLISS.) over a half note G2, then eighth notes G2-A2, A2-B2, B2-C3, C3-B2, B2-A2, A2-G2, and a quarter note G2. The fourth staff continues with eighth notes G2-A2, A2-B2, B2-C3, C3-B2, B2-A2, A2-G2, followed by a glissando (GLISS.) over a half note G2, then eighth notes G2-A2, A2-B2, B2-C3, C3-B2, B2-A2, A2-G2, and a quarter note G2.

OUTRO CHORUS

The 'OUTRO CHORUS' section consists of four staves of music. The first staff contains a sequence of eighth and quarter notes. The second staff features a more complex melodic line with slurs and some notes marked with an 'x'. The third staff is simpler, with a few notes and a rest. The fourth staff concludes the section with a melodic line and the text 'FADE OUT' written above it.

EXTENDED OUTRO FROM 'THE STRIPPED MIXES'

The 'EXTENDED OUTRO FROM 'THE STRIPPED MIXES'' section consists of two staves. The first staff has a rhythmic pattern of eighth notes, some marked with an 'x'. The second staff begins with a triplet of eighth notes, indicated by a '3' below the notes, followed by a rest and then a final note.