

♩ = 120

# RATHER BE

CLEAN BANDIT - 'NEW EYES' (2014)

## INTRO

G#m F# E B G#m F# E B/D#

G#m F# E B/D# E C#m

## VERSE

8

## PRECHORUS

E D#m G#m

w/OCTAVE PEDAL (100% WET SIGNAL)

## CHORUS

2

VERSE (w/PICK)

w/OCTAVE PEDAL (50/50 WET/DRY SIGNAL)

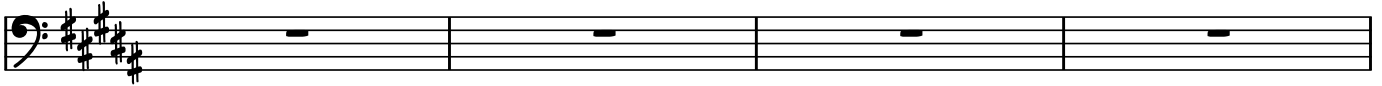
PRECHORUS

E D#m G#m

w/OCTAVE PEDAL (100% WET SIGNAL)

CHORUS

MIDDLE 8



KEYS CUE:



PRECHORUS



CHORUS

