

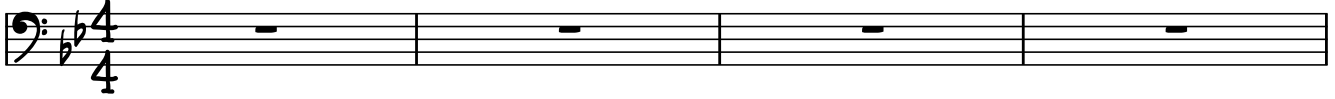
Rock ♩ = 122

HOW TO SAVE A LIFE

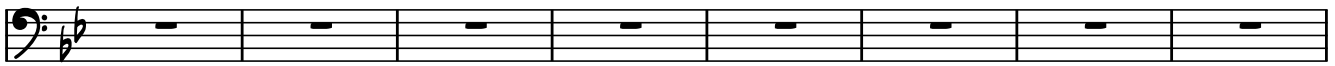
THE FRAY - 'HOW TO SAVE A LIFE' (2005)

THE FRAY

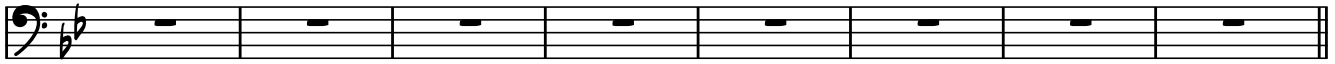
INTRO (PIANO)



VERSE 1



(DRUMS ENTER)



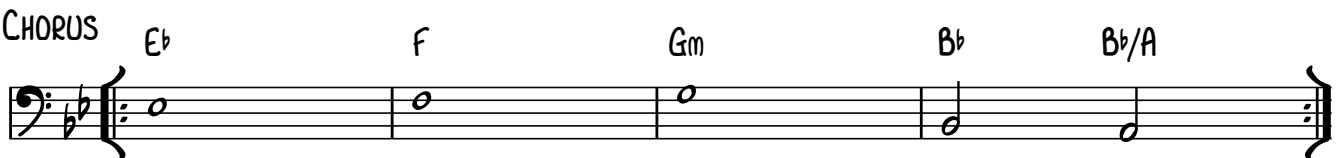
CHORUS



VERSE

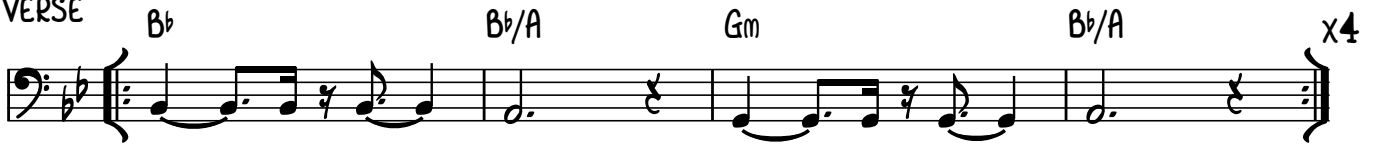


CHORUS



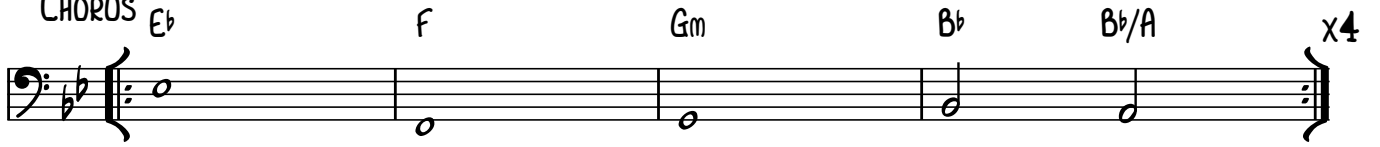
VERSE

B \flat B \flat /A Gm B \flat /A x4

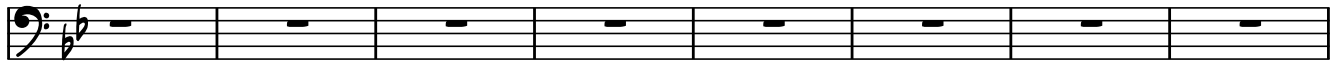


CHORUS

E \flat F Gm B \flat B \flat /A x4

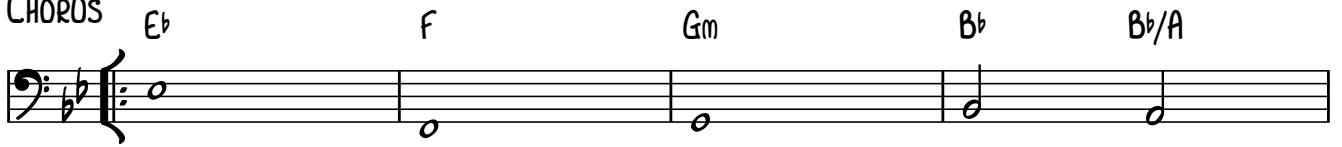


BREAKDOWN



CHORUS

E \flat F Gm B \flat B \flat /A



E \flat F Gm B \flat B \flat /A

