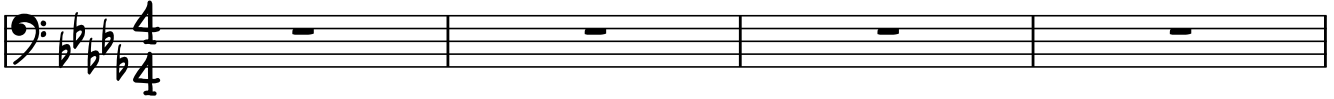


UMBRELLA

RIHANNA - 'GOOD GIRL GONE BAD' (2007)

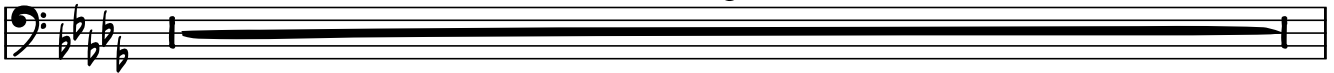
♩ = 90

INTRO



RAP

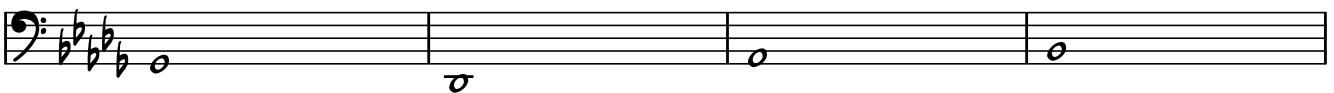
8



VERSE 1



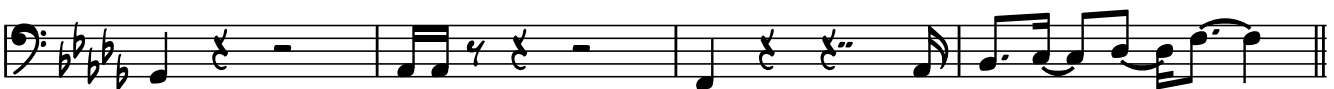
CHORUS



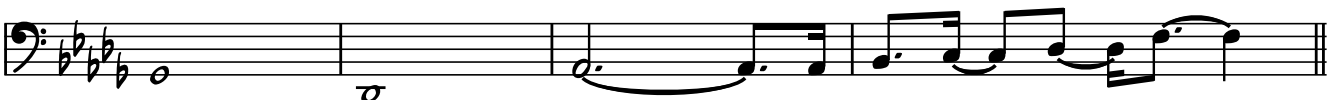
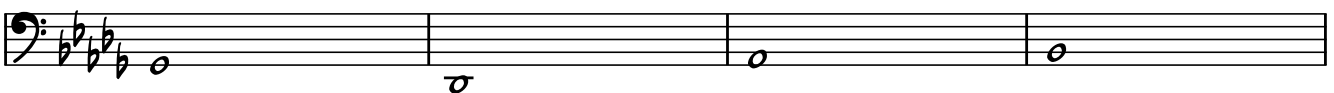
TAG



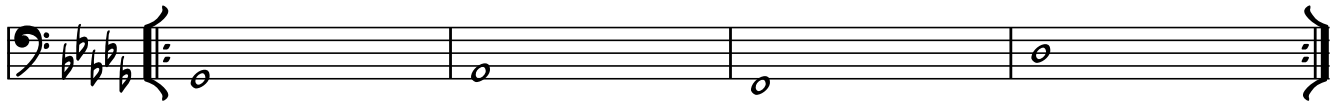
VERSE 2



CHORUS

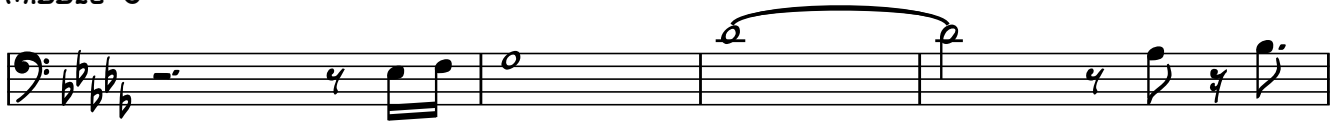


TAG



Musical notation for the TAG section, consisting of a single staff with a bass clef and a key signature of three flats. It features four measures of music, each containing a whole note, ending with a double bar line and repeat dots.

MIDDLE 8

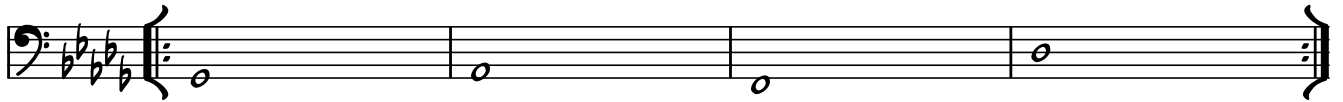


Musical notation for the MIDDLE 8 section, consisting of a single staff with a bass clef and a key signature of three flats. It features four measures of music. The first measure has a whole rest. The second measure has a quarter note followed by an eighth note. The third measure has a half note with a slur over it. The fourth measure has a quarter note followed by an eighth note.

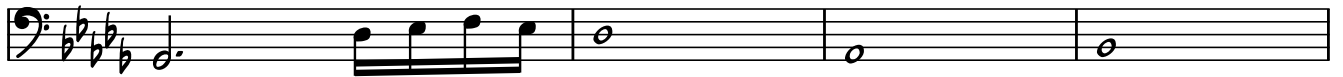


Musical notation for the MIDDLE 8 section, consisting of a single staff with a bass clef and a key signature of three flats. It features four measures of music. The first measure has a quarter note followed by an eighth note. The second measure has a half note. The third measure has a quarter note followed by an eighth note. The fourth measure has a quarter note followed by an eighth note.

CHORUS



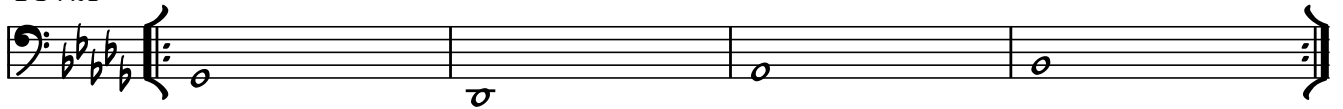
Musical notation for the CHORUS section, consisting of a single staff with a bass clef and a key signature of three flats. It features four measures of music, each containing a whole note, ending with a double bar line and repeat dots.



Musical notation for the CHORUS section, consisting of a single staff with a bass clef and a key signature of three flats. It features four measures of music. The first measure has a quarter note followed by an eighth note. The second measure has a half note. The third measure has a whole note. The fourth measure has a whole note.

OUTRO

REPEAT TO FADE



Musical notation for the OUTRO section, consisting of a single staff with a bass clef and a key signature of three flats. It features four measures of music, each containing a whole note, ending with a double bar line and repeat dots.