

BASKET CASE

BASS: MIKE DIRNT

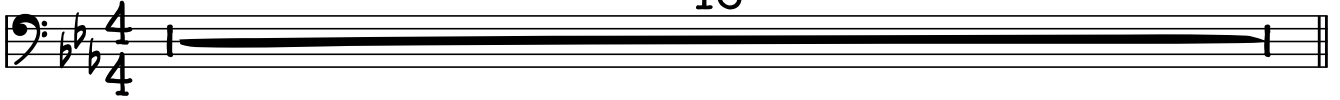
w/PICK

♩ = 148

GREEN DAY: 'DOOKIE' (1994)

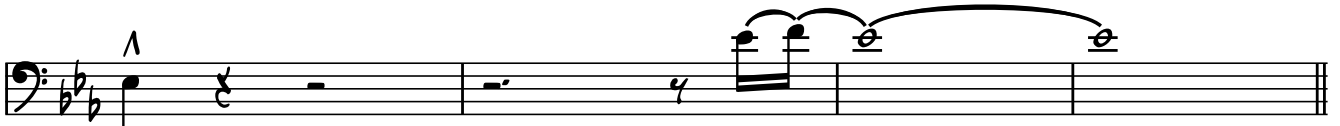
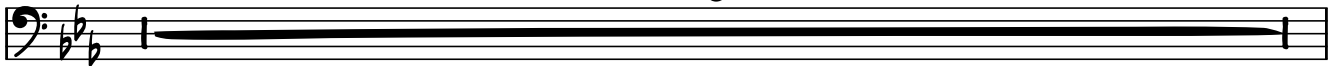
VERSE

16



(DRUMS IN)

8



VERSE



CHORUS



TO CODA

Riff

Musical notation for the Riff section, consisting of a single staff with a double bar line and repeat sign. The notation includes a key signature of two flats and a 4/4 time signature. The riff consists of a sequence of eighth notes: G2, A2, B2, C3, D3, E3, F3, G3, followed by a quarter rest, then G3, A3, B3, C4, D4, E4, F4, G4, followed by another quarter rest.

D.S. AL CODA

Musical notation for the D.S. AL CODA section, consisting of a single staff. The notation includes a key signature of two flats and a 4/4 time signature. The section begins with a series of eighth notes: G2, A2, B2, C3, D3, E3, F3, G3, A3, B3, C4, D4, E4, F4, G4, followed by a quarter rest, then G4, A4, B4, C5, followed by a quarter rest.

♩ TAG

Musical notation for the TAG section, consisting of a single staff with a repeat sign and 'x3' marking. The notation includes a key signature of two flats and a 4/4 time signature. The tag consists of a sequence of eighth notes: G2, A2, B2, C3, D3, E3, F3, G3, A3, B3, C4, D4, E4, F4, G4, followed by a quarter rest, then G4, A4, B4, C5, followed by a quarter rest.

Musical notation for the TAG section, consisting of a single staff. The notation includes a key signature of two flats and a 4/4 time signature. The tag consists of a sequence of eighth notes: G2, A2, B2, C3, D3, E3, F3, G3, A3, B3, C4, D4, E4, F4, G4, followed by a quarter rest, then G4, A4, B4, C5, followed by a quarter rest.

Musical notation for the TAG section, consisting of a single staff. The notation includes a key signature of two flats and a 4/4 time signature. The tag consists of a sequence of eighth notes: G2, A2, B2, C3, D3, E3, F3, G3, A3, B3, C4, D4, E4, F4, G4, followed by a quarter rest, then G4, A4, B4, C5, followed by a quarter rest.