

DEJA VU

BEYONCÉ - 'B'DAY' (2006)

BASS: JON JON WEBB

♩ = 106

INTRO

The Intro section consists of two staves of music in 4/4 time. The first staff begins with a 4-measure rest, followed by a melodic line with eighth notes and quarter notes, marked with 'x' for muted notes. The second staff continues the melodic line and includes a triplet of eighth notes. A 'trill' annotation is placed above the final notes of the second staff. The section concludes with a double bar line and a repeat sign, with a 'x3' multiplier at the end.

RAP VERSE

The Rap Verse section consists of three staves of music in 4/4 time. The first staff begins with a 4-measure rest, followed by a melodic line with eighth notes and quarter notes, marked with 'x' for muted notes. The second staff continues the melodic line. The third staff concludes the section with a double bar line and a repeat sign, with a '2' multiplier at the end.

SUNG VERSE

The Sung Verse section consists of two staves of music in 4/4 time. The first staff begins with a 4-measure rest, followed by a melodic line with eighth notes and quarter notes, marked with 'x' for muted notes. The second staff continues the melodic line and includes a triplet of eighth notes. A 'trill' annotation is placed above the final notes of the second staff. The section concludes with a double bar line and a repeat sign, with a 'x3' multiplier at the end.

PRECHORUS

The Prechorus section consists of two staves of music in 4/4 time. The first staff begins with a 4-measure rest, followed by a melodic line with eighth notes and quarter notes, marked with 'x' for muted notes. The second staff continues the melodic line and includes a triplet of eighth notes. The section concludes with a double bar line and a repeat sign, with a '3' multiplier at the end.

CHORUS

x3

Musical notation for the Chorus section, consisting of two staves of bass clef music. The first staff begins with a repeat sign and contains several measures of music with notes and rests. The second staff continues the melody and includes the instruction "TO CODA" above it.

VERSE 2

Musical notation for Verse 2, consisting of four staves of bass clef music. The first staff starts with a whole rest. The second and third staves continue the melodic line. The fourth staff features a triplet of eighth notes and a trill, with the instruction "D.S. AL CODA" written above it.



RAP

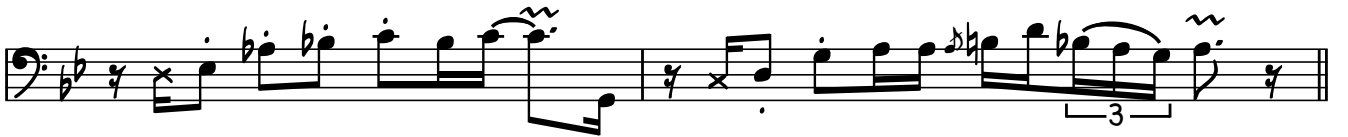
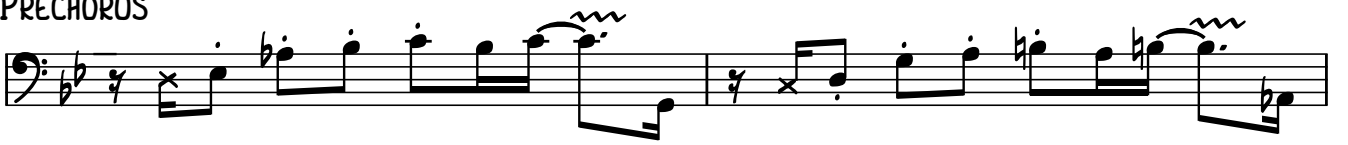
Musical notation for the Rap section, consisting of four staves of bass clef music. The first staff begins with a treble clef and contains several measures of music. The subsequent staves continue the melodic line with various notes and rests.



BRIDGE



PRECHORUS



CHORUS



PRECHORUS

