

# DANCING ON THE CEILING

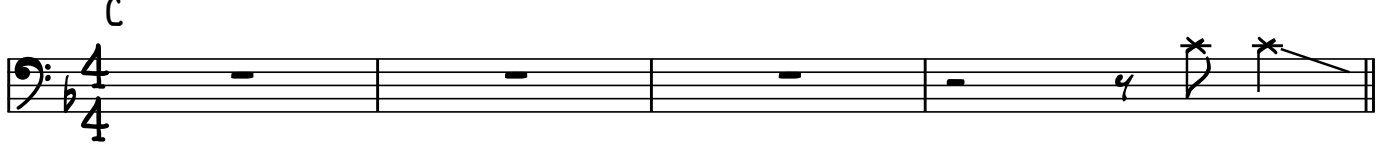
♩ = 133

LIONEL RICHIE - 'DANCING ON THE CEILING' (1986)

BASS: NEIL STUBENHAUS

## INTRO

C



5 C(SUS4) C G/B F




## VERSE

9 C Bb F C Bb F



13 C Bb F G



## CHORUS

17 C(SUS4) C G/B F D.S.



21 C(SUS4) C G/B F

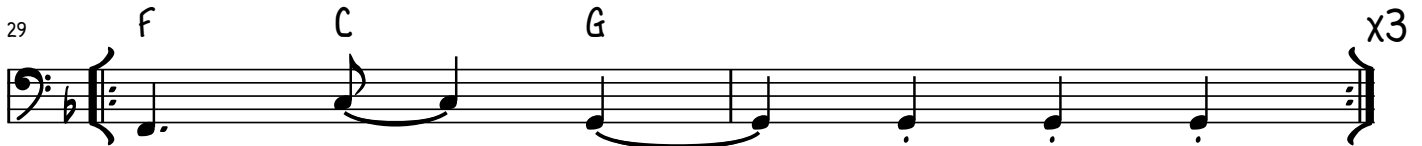


25 C(SUS4) C G/B F

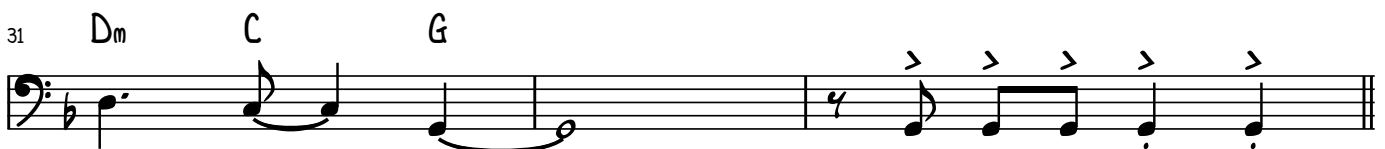


## GUITAR SOLO

29 F C G x3



31 Dm C G



2 BRIDGE

34 F C G

38 F C G C G

42 F C G Dm

46 F G A

INTERLUDE (PIANO BASS PART)

50 D

VERSE

54 D C G D C G

58 D C G A

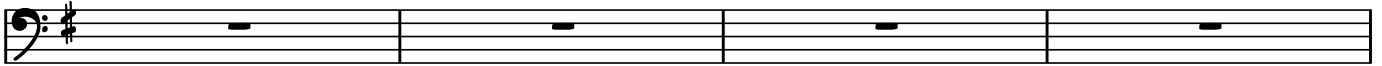
CHORUS

62 D(SUS4) D A/C# G

66 D(SUS4) D A/C# G

# BREAKDOWN

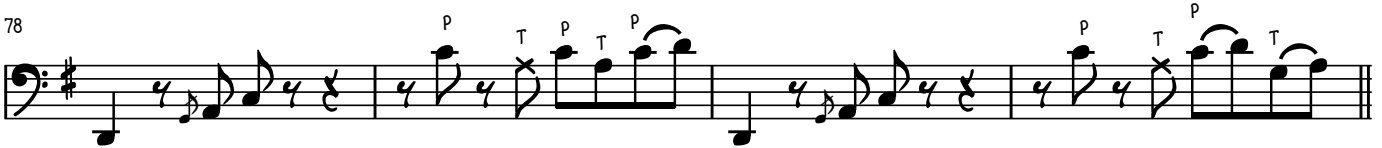
70 D7



74



78



82



# OUTRO CHORUS

VAMP TO FADE

86 D(SUS4) D

