

♩ = 117

# BURN THIS DISCO OUT

MICHAEL JACKSON - 'OFF THE WALL' (1979)

BASS: LOUIS JOHNSON

## INTRO



## 5 MAIN GROOVE



## 13 VERSE



## 21 PRECHORUS



## 27 CHORUS



## 31 VERSE



35



37



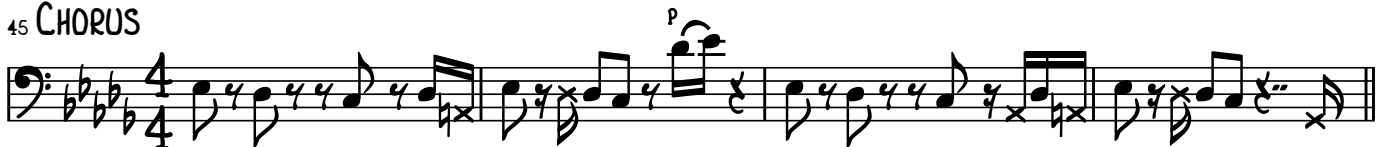
## 39 PRECHORUS



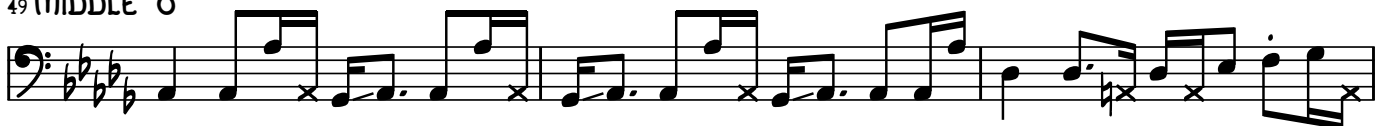
41



## 45 CHORUS



## 49 MIDDLE 8



52



55



58 VERSE

62

66 PRECHORUS

68

72 CHORUS

76 HORN BREAK

80

84 PRECHORUS

86

4

90 OUTRO

Measures 90-93: Bass clef, key signature of three flats (B-flat, E-flat, A-flat), 4/4 time signature. Measure 90: G2, A2, B2, C3, D3, E3, F3, G3. Measure 91: G3, A3, B3, C4, D4, E4, F4, G4. Measure 92: G4, A4, B4, C5, D5, E5, F5, G5. Measure 93: G5, A5, B5, C6, D6, E6, F6, G6.

94

Measures 94-97: Bass clef, key signature of three flats, 4/4 time signature. Measure 94: G2, A2, B2, C3, D3, E3, F3, G3. Measure 95: G3, A3, B3, C4, D4, E4, F4, G4. Measure 96: G4, A4, B4, C5, D5, E5, F5, G5. Measure 97: G5, A5, B5, C6, D6, E6, F6, G6.

98

Measures 98-101: Bass clef, key signature of three flats, 4/4 time signature. Measure 98: G2, A2, B2, C3, D3, E3, F3, G3. Measure 99: G3, A3, B3, C4, D4, E4, F4, G4. Measure 100: G4, A4, B4, C5, D5, E5, F5, G5. Measure 101: G5, A5, B5, C6, D6, E6, F6, G6.

102 BEGIN FADE OUT

Measures 102-105: Bass clef, key signature of three flats, 4/4 time signature. Measure 102: G2, A2, B2, C3, D3, E3, F3, G3. Measure 103: G3, A3, B3, C4, D4, E4, F4, G4. Measure 104: G4, A4, B4, C5, D5, E5, F5, G5. Measure 105: G5, A5, B5, C6, D6, E6, F6, G6.

106

FADE OUT

Measures 106-109: Bass clef, key signature of three flats, 4/4 time signature. Measure 106: G2, A2, B2, C3, D3, E3, F3, G3. Measure 107: G3, A3, B3, C4, D4, E4, F4, G4. Measure 108: G4, A4, B4, C5, D5, E5, F5, G5. Measure 109: G5, A5, B5, C6, D6, E6, F6, G6.